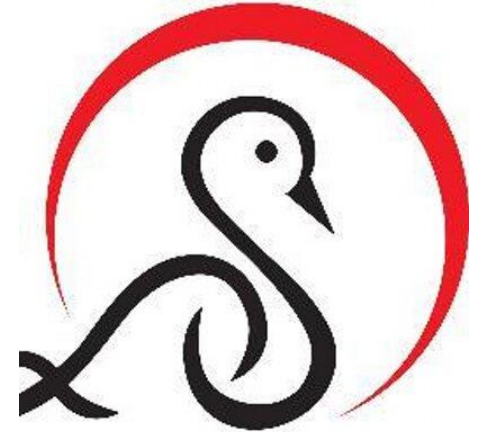


Returning to School - School Plans and Advice for Parents in the Nursery/EYFS/Year 1/Year 6 and Vulnerable and Critical Workers

Throughout the past two weeks, schools have received guidance from the Government and we wanted to write to you to update you on our plans for a Safe Return to School for your children and our staff. The initial date proposed for the reopening was the 1st June. However, our Trust have made the decision to postpone the reopening of the Nursery, Reception, Year 1 and Year 6. **The reopening of the school to these specific year groups will now begin the week commencing 8th June. This decision is for the safety of staff and pupils.**

Thank you for all your emails and phone calls since the announcement. We want to make this a positive and caring experience for all our children, looking after them to ensure they feel safe and settled as we ease them back into school life. The information I have shared is fully transparent and it is down to you, as parents, to make a decision that is right for your child and family.



National Guidance for parents [here](#)

Public Health England Advice

PPE-Personal Protective Equipment

-Wearing a face covering or face mask in schools or other education settings is **not recommended**.

-PPE is only needed if children need intimate care, young people and students whose care routinely already involves the use of PPE due to their intimate care or if a child, young person or other learner becomes unwell with symptoms of coronavirus.

Social Distancing

-We know that, unlike older children and adults, Early Years and Primary age children **cannot be expected to remain 2 metres apart from each other and staff**. In deciding to bring more children back to Early Years and schools, we are taking this into account. Schools should therefore work through the hierarchy of measures set out above:

- avoiding contact with anyone with symptoms
- frequent hand cleaning and good respiratory hygiene practices
- regular cleaning of settings
- minimising contact and mixing

Where settings can keep children 2m away-they should do so (Year 6).

Key Information

In schools, preventing the spread of coronavirus involves dealing with direct transmission (for instance, when in close contact with those sneezing and coughing) and indirect transmission (via touching contaminated surfaces). These include:

- minimising contact with individuals who are unwell by ensuring that those who have coronavirus symptoms, or who have someone in their household who does, do not attend childcare settings, schools or colleges
- cleaning hands more often than usual - wash hands thoroughly for 20 seconds with running water and soap and dry them thoroughly or use alcohol hand rub or sanitiser ensuring that all parts of the hands are covered
- ensuring good respiratory hygiene by promoting the 'catch it, bin it, kill it' approach
- cleaning frequently touched surfaces often using standard products, such as detergents and bleach
- minimising contact and mixing by altering, as much as possible, the environment (such as classroom layout) and timetables (such as staggered break times).



Public Health
England

National Guidance [here](#)

What will this look like at our school

To ensure the school is safe for pupils and staff...

- The school will open on the 8th June for Nursery/Reception and Y6 ONLY.
- All classes will return on Monday 8th June as well as those currently attending as children of Key Workers or other specified groups.
- The pupils will be organised in 'bubbles' of no more than 15 children.
- Year groups will have staggered start times, finish times, break times and lunch times.
- Each year group will have their own directed route to enter the school with 2m demarcations for social distancing.
- A one way system will be in place to allow children to be dropped off, and 2m demarcations will be in place.
- Each 'bubble' will have its own designated outdoor break time.
- Each 'bubble' will be supervised by the same staff throughout the day for consistency.
- There will be 4 members of staff assigned to each bubble.
- Lunch will be served inside each 'bubble's' classroom and will be a packed lunch. This will be delivered to each class during the morning, or you may wish to provide a packed lunch.
- The school will operate Monday to Friday for the children of key workers or specified groups, F1, F2, Year 1 and Year 6.
- Children in 'bubbles' must attend every day unless they are ill.
- **If your child is accessing Nursery or Reception, you must not enroll them in any other private childcare provision.**

Continued.....

- Only one parent allowed on site for Nursery, Reception, and Year 1, Year 6 or Key Workers.
- Any parents in Nursery, Reception and Year 1 not adhering to the social distancing measure in place by the school will not be granted a place.
- No vehicles of parents/carers will be permitted on site at anytime, including the Nursery.
- Start times and pick up times must be adhered to.
- If arriving late, you should wait in a designated area outside the school entrance until your child is allowed to enter the building.
- Public Health advise against staff and pupils wearing gloves or face masks.
- Staff will be present at drop off and collection however if you wish to speak to them, the school office must be contacted via telephone and a phone call will be arranged immediately. If information is urgent, please call before the start of the school day.
- Please ensure children attend school wearing long lasting sun cream.
- Book bags are not to be brought to school, please ensure your child only brings a packed lunch box and water bottle.

IMPORTANT

Due to the high numbers of pupils, we are unable to provide separate toilets for every bubble of children. We will ensure cleaners are on site throughout the day to provide regular cleaning. Children will be supervised when at the toilets to ensure limited contact is made.

Hygiene Measures

- School will be cleaned thoroughly each night and throughout the day. Measures will be in place to ensure each classroom and resources are thoroughly ready for the next day.
- Regular hand washing timetabled.
- [Catch It/Bin It/Kill It.](#)
- Handwashing will be communicated and timetabled regularly in school. Most classrooms are fitted with sinks and communal areas are fitted with a sink, soap and hand sanitizers.
- Tissues will be available in all classrooms in order to [Catch It/Bin It/Kill It.](#)
- Common areas and equipment will be cleaned down at regular intervals during the day with antibacterial sprays and wipes.
- Equipment will be restricted in Nursery, Reception and Year 1.
- All pupils in Year 1 and 6 (including Key Workers) will have their own classroom/ workspace. Equipment, exercise book which will be kept in a zip wallet.
- Teachers will not be taking home any books to mark and all books will remain in the child's personal zipped wallet. This is to avoid cross contamination.
- Children must provide their own water bottles. These have already been provided to all children.

[School Cleaning Guidance](#)

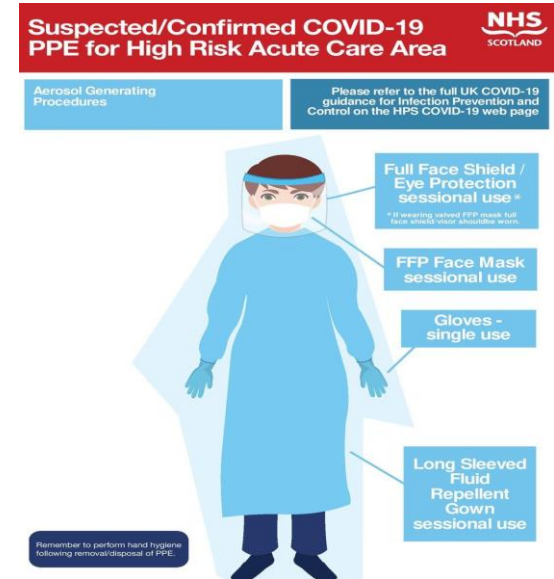
Handwashing Guidance [here](#)



Personal Protective Equipment

- PPE will be provided to staff when dealing with pupils who have intimate care needs and any pupils displaying symptoms.
- This will also be available for staff that request it who feel vulnerable.
- It is down to staff and pupil's personal choice to wear PPE.
- School will not provide PPE for pupils as it is against Public Health's advice, however if they wish to bring their own, that is their choice.
- There will be a dedicated room within the school for CoVid19 with PPE stock and facilities for any staff member or child displaying symptoms.
- Any pupil displaying symptoms will be taken to this room and parents will be called to immediately collect. A call will then be made to all other children's parents within that bubble to inform them.

National Guidance [here](#)



Social Distancing

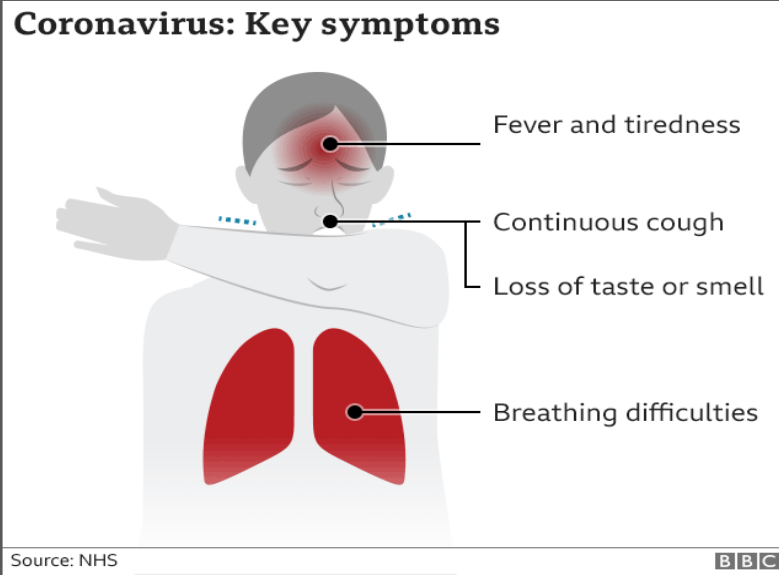
- Staggered starts times/finish times/lunch breaks.
- Children organised into 'bubbles' and will stay in these all day with the same members of staff.
- Playground/entry 2m distancing with signage.
- Designated playtimes for each 'bubble' during a staggered break/lunch rota.
- Designated drop off area for children in Nursery, Reception and Year 1, Year 6 and Key worker/specified children.
- 15 pupils maximum in each class 'bubble' with 2m distancing in Year 6, Year 1 and Key Worker bubbles.
- 2m distancing will be encouraged in Reception whenever the group in the bubble are together-eg story time, class discussions etc. In line with Government guidelines, we cannot keep the younger children apart but will do our very best to encourage this.
- Additional staffrooms have been created in school to minimise contact between staff and children and in each of these spaces social distancing will be adhered to by all staff members.
- No external member of staff will be allowed on site, including Advotalk and Sports Coaches.

HM Government



Checking/Testing of staff and pupils for symptoms

- Temperature checks will not be taken on arrival by the school but we recommend parents do this daily as an extra precaution.
- Do not risk the lives of our pupils and staff by administering Calpol before bringing your child to school to bring down a temperature.
- Any child or adult showing symptoms whilst in school will be moved to a designated isolation area in school. Parents will be called immediately and the child should be collected as soon as possible.
- Any child/adult with symptoms will be recommended a test and the appropriate advice followed-ie self isolation. This will be 7 days.
- If a confirmed case-all adults and pupils in this 'bubble' will be tested immediately and recommendations followed including self isolation.



National Guidance [here](#)

Pupil Wellbeing

In School:

- On return, the school is creating a wellbeing focus to its curriculum in order to prepare students for social distancing, hygiene and their experiences in lockdown.
- We will continue sharing work and successes via Twitter.

Virtual Learners:

- Designated members of staff will continue providing home learning activities for all year groups. These will continued to be accessed via the website.
- Online safety [activities and advice](#).
- From the 8th June, there will not be the capacity to continue to call all parents. Please contact the school if you have any issues.
- Regular contact for vulnerable pupils and an unconditional school place will be offered in these circumstances.



The following pages inform you of individual year group arrangements. We are trying to keep everyone informed to ensure complete transparency.
However, please be aware that these plans may change at anytime due to government guidance or unforeseen circumstances.
We appreciate your understanding.

Nursery Drop Off and Pick Up Arrangements

No vehicles are permitted to enter the mains gates. Any parent/carer not adhering to these arrangements will not be allowed on site and your child's place will be removed.

Return Date	8th June (Depending on allocated Days)
Morning Session	9:00am – 11:45am
Afternoon session	12:15 - 3pm
Staffing (Monday/Tuesday)	Mr Austin/Miss Tock
Staffing (Wednesday/Thursday/Friday)	Miss Brankling/Mrs Dixon (Please note that staff will alternate the start and end of the week)



Nursery Pick up/Drop off point is inside the Nursery Gate. A loop of socially distanced markings will be displayed on the floor. Only 1 parent will be allowed to remain with their child. Children must remain with their adult and socially distance at drop off times. Once dropped off, parents should follow the one way system within the school grounds and leave via the main gate. On collection, parents should stand on the markings until children are handed over in order and then parents and children should follow the one way system. Any children being collected at lunchtime will leave the school site via the same entrance they entered and not follow the one way system at this point.

Foundation 2 Drop Off and Pick Up Arrangements

No vehicles are permitted to enter the mains gates. Any parent/carer not adhering to these arrangements will not be allowed on site and your child's place will be removed.

Return Date	8th June
Drop off	9.00am
Pick up	3.00pm
Staffing (Monday/Tuesday)	Mrs Johnson/ Mrs Watling
Staffing (Wednesday/Thursday/ Friday)	Mrs Stephenson/ Miss Green (Please note that staff will alternate the start and end of the week)



Foundation 2 drop off point is outside the Foundation 2 play area. A line of socially distanced markings will be displayed on the floor. Only 1 parent will be allowed to remain with their child. Children must remain with their adult and socially distance at drop off times. Once dropped off, parents should continue to follow the one way system within the school grounds and leave via the main gate. On collection, parents should stand on the markings until children are handed over in order, moving forward when necessary. Parents and children should then follow the one way system.

Year 1 Drop Off and Pick Up Arrangements

No vehicles are permitted to enter the mains gates. Any parent/carer not adhering to these arrangements will not be allowed on site and your child's place will be removed.

Return Date	8th June
Drop off	8.40am
Pick up	2.40pm
Staffing (Monday/Tuesday)	Mr Good/ Miss Stuart
Staffing (Wednesday/Thursday/ Friday)	Mrs Sykes/ Miss Dyson (Please note that staff will alternate the start and end of the week)



Year 1 drop off point is outside the Key Stage 1 door. Socially distanced markings will be displayed on the floor. Only 1 parent will be allowed to remain with their child. Children must remain with their adult and socially distance at drop off times. Once dropped off, parents should continue to follow the one way system within the school grounds and leave via the main gate. On collection, parents should stand on the markings until children are handed over in order, moving forward when necessary. Parents and children should then follow the one way system.

Year 6 Drop Off and Pick Up Arrangements

No vehicles are permitted to enter the mains gates. Any parent/carer not adhering to these arrangements will not be allowed on site and your child's place will be removed.

Return Date	8th June
Drop off	8.50am
Pick up	2.50pm
Staffing (Monday/Tuesday)	Miss Northen/ Mrs Pulford
Staffing (Wednesday/Thursday/ Friday)	Miss Brady/ Mrs Dorley (Please note that staff will alternate the start and end of the week)



Year 6 drop off point is outside the Year 3 and 6 fire doors. Socially distanced markings will be displayed on the floor. Only 1 parent will be allowed to remain with their child. Children must remain with their adult and socially distance at drop off times. Once dropped off, parents should continue to follow the one way system within the school grounds and leave via the main gate. On collection, parents should stand on the markings until children are handed over in order, moving forward when necessary. Parents and children should then follow the one way system.

Key Worker Children and Specified groups - Drop Off and Pick Up Arrangements

No vehicles are permitted to enter the mains gates. Any parent/carer not adhering to these arrangements will not be allowed on site and your child's place will be removed.

Return Date	8th June
Drop off	8.30am
Pick up	2.30pm
Staffing (Monday/Tuesday)	Miss Lancaster/Miss Parker
Staffing (Wednesday/Thursday/ Friday)	Mr Boyton/Miss Anderson (Please note that staff will alternate the start and end of the week)



Drop off point is outside the school hall door in the main playground. Socially distanced markings will be displayed on the floor and children will be informed which line they should stand on. Only 1 parent will be allowed to remain with their child. Children must remain with their adult and socially distance at drop off times. Once dropped off, parents should continue to follow the one way system within the school grounds and leave via the main gate. On collection, parents should stand on the markings until children are handed over in order, moving forward when necessary. Parents and children should then follow the one way system.

Drop Off and Pick Up Arrangements

Please note signage will be displayed to make this process as smooth as possible. In all instances we would ask that everybody displays patience and we will support as much as we can to make this system work.



Late Arrival

You should inform the school if you are going to arrive late. As a school we would ask that this does not happen but if it should you should stand in front of the school office on the grassed area until granted permission to enter. Markings will show where to stand.

Thank you.

Our Virtual School Offer from 1st June

We will continue to provide online learning for all year groups. Please contact the school office if you require assistance with these resources. If you would like to speak with your child's class teacher please follow the same process and they will contact you by phone as soon as possible.

