

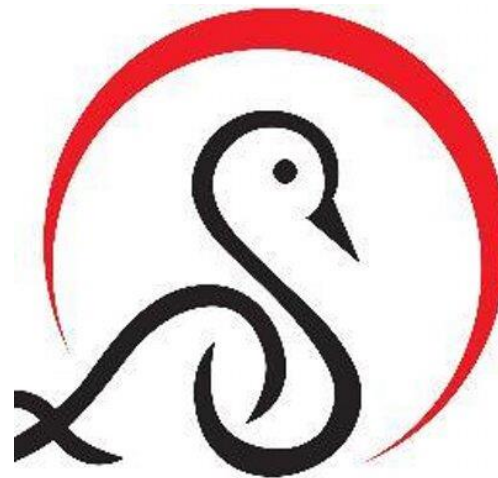
Returning to School - School Plans and Advice for Parents for September 2020

Following the recent guidance, we wanted to write to you to update you on our plans for a safe return to school for your children and our staff in September.

We are pleased to announce that the school will reopen to all pupils on Wednesday 9th September. Due to current guidelines in place, the school will of course run slightly differently to what the pupils are used to, ensuring all safety measures are in place to protect pupils and staff.

Despite the changes we are having to make, we are determined to ensure the children return to a positive and caring environment where the needs of all our pupils are met. Over the past few weeks, the school has worked hard to develop a recovery curriculum that will ensure our pupils feel safe and settled as they return to school life. The information I have shared is following the current guidance in place and may be subject to change if further advice is given.

Please ensure all slides are read and please contact us on admin@stoneferry.hull.sch.uk if you have any further questions.



National Guidance for September can be found [here](#)



Welcome Back

On **Wednesday 9th September** all pupils will be welcomed safely back to school and we cannot wait!

As the children have missed a significant amount of time in school, which may have affected their emotional, social and mental well being, we really want to help in giving them all a very settled start to the new term.

What will this look like?

- The children will return to their new classrooms from Wednesday 9th September.
- Staff will be present on the playground to help everyone enter safely and quickly.
- In KS2, class teachers will be using the same classrooms as last year. Children will enter through the external doors for their new classroom.
- Our new Year 2 class will remain in their current classroom and will use the external door for this room.
- Our new Year 1 class will be taught in the old Year 2 classroom and will use the external door for this room.
- Foundation 1 and 2 will enter as they have done previously.
- **Separate arrangements for the transition of pupils into Foundation 2 have been made with parents.**



The School Day

In order to ensure that parents and children arrive and leave school as safely as possible, we will be staggering the times that different classes arrive and leave. This is in line with the government guidelines. In addition, we will be following a one way system through the school grounds which will maintain distancing between different families and allow for a continual free flow of people.

Start and end times to the day are fixed and from September, children must be dropped off and collected at the times below. Whilst we appreciate that this may cause inconvenience, with the additional pupils returning to school, in order to follow the guidelines and risk assessments we have put in place to allow this, we must insist this is the case. We would also ask that where possible only one parent or family member collects children from the school site.

| Class | Drop off time | Pick up time |
|----------------------------|------------------------|------------------------|
| Year 5 and 6 | 8:40 | 2:40 |
| Year 3 and 4 | 8:50 | 2:50 |
| Year 1 and 2 | 9:00 | 3:00 |
| Foundation 2 | 8:40 | 2:40 |
| Foundation 1 (sessions) | 8:30-11:30 (Session 1) | 12:00-3:00 (Session 2) |



Returning to School

- During the first three days, the children will have the opportunity to talk about their experiences during the time they were absent from school, establish new routines, foster relationships with their new teacher and re-affirm friendships.
- This will be facilitated by carefully planned activities throughout these three days. The children will complete activities such as; hygiene measures, safe outdoor play, team games, circle times to discuss worries and concerns and rediscover collaborative learning whilst building their levels of concentration and working habits. The research behind this can be found in our recovery curriculum document.
- We will also be re-establishing outstanding attitudes for learning and clear routines to ensure the children quickly start to make progress with their academic work.



Recovery Curriculum

For the duration of the Autumn term and onwards if necessary, the school will be running a recovery curriculum to ensure the emotional wellbeing of our pupils is supported. The basics of this curriculum is shared below and further information can be found alongside this document on the school website.

S Safety and Security- Establish new routines to be safe and feel safe.

P Physical health- Health and hygiene and being active.

A Academic Standards- Re-establishing positive learning behaviours and addressing gaps in pupils' learning.

C Creativity- Re-establishing ways to work with others-group work/communication.

E Emotional wellbeing- Rebuilding positive relationships with adults/peers and managing feelings and behaviours.



Classroom Environments

To ensure we are following the advice given, the layouts of our classrooms will be required to change in order to reduce the risk of pupils transferring/catching Covid-19.

Tables will no longer be in groups and all pupils (where possible) will be facing forwards.

An example of how the classrooms will look in September can be found below. Please share this image with your children to help prepare them for their return.



Please note- All pupils will be given their own bag of resources to use so they do not share. Please do not spend money on pencil cases over the summer as these will not be allowed at this time. We have everything the children will need.





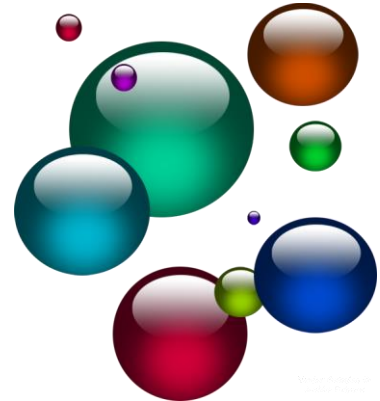
Bubbles

The guidelines advise that primary aged pupils can be taught in bubbles of 30.

Stoneferry will primarily be sticking to bubbles of 30 but as the guidelines state, in order for us to fully open, there will be times where classes will come into contact with one another.

Examples of where this will occur is; Breakfast club (see further information) and lunchtimes.

Please note- where this is necessary, social distancing will be implemented to reduce risk.





Lunch Times

To facilitate a safe environment and to ensure that pupils are remaining in their class bubbles children will eat their lunches within their classrooms, including hot dinners.

This is to ensure that we are adhering to the safety guidance for the reopening of the school.

Pupils will be supervised at all times and also be given the opportunity to play outside. Lunchtimes will be staggered across the school to ensure year groups and classes (where possible) are not mixing outside and when using the toilets.

Example staggered timetable

| Year Group | Lunch | Playtime |
|---------------------|-------------------|--|
| Reception | 11:45 a.m. | Organised within Foundation 2 setting |
| Year 1 | 12:00pm | 12.15pm-12.45pm (Half of playground) |
| Year 2 | 12:00pm | 12.15pm-12.45pm (Half of playground) |
| Year 3 | 12.30pm | 12.45am-1:15pm (Half of playground) |
| Year 4 | 12.30pm | 12.45am-1:15pm (Half of playground) |
| Year 5 | 12:15pm | 11:45am – 12:15pm (Half of playground) |
| Year 6 | 12:15pm | 11:45am – 12:15pm (Half of playground) |
| Foundation 1 | 12pm | For 30 hour pupils |



Lunch Offer

In light of the DFE guidance published in July 2020, all primary schools are planning to organise pupils in bubbles. Therefore, an alternative approach will be in practice, which will allow pupils to eat in their classrooms.

This will ensure that bubbles are not broken.

Will a hot meal be offered?

It will be possible to provide a hot meal option and a packed lunch option for all pupils. The hot meals will be delivered in aeroplane style trays with environmentally friendly disposable cutlery. An example of this can be seen on the next slide.

Menu options would be limited each day: Eg:

1 hot meat option

1 hot vegetarian option

Ham or Cheese choice of sandwich bag option.

Pupils will need to order their options in advance so that kitchens can prepare the orders.

Traditional school puddings eg: sponge and custard will be temporarily removed from school menus. These will be replaced with fruit bags, yogurts and jelly.

IMPORTANT- Meals for children wishing to stay school dinners in the first three days back (Wednesday 9th - Friday 11th) must be preordered by 17th July in order for the catering staff to ensure sufficient provisions are in place for pupils. Details can be found on the school website homepage.



Examples of how hot meals will be served



Individual lidded food tray.

The meal can be provided and eaten from the tray. Trays are designed to maintain the required temperature for hot food and have 3 sections to keep items separate.

Individual lidded container – this would be used to serve meals such as pasta where all ingredients are together. This is biodegradable and can be disposed of along with food waste.



Bamboo cutlery. These are biodegradable and can be disposed of along with food waste.

Each classroom will have its own supply of bamboo cutlery as well as biodegradable napkins, disposable cloths, sanitiser spray etc...





Breakfast Club

At Stoneferry, we appreciate many of our parents require the support of the school's breakfast club. Our club provides support for pupils from reception through to year 6 and from September, this will take place in the school hall.

The guidance for September states that at primary school, where possible, we should be keeping the children within their class bubbles of 30.

To enable breakfast club to open safely, as a school this means we will need to create several different spaces within the school hall to enable for this to run safely. Each class will remain in their own space/bubble to ensure that children are separated from one another.

We are to open our Breakfast Club from **Monday 14th September**. Please ensure that you have contacted the school to express your interest. A booking form will be created based on the space we have available in school. Breakfast club will still be charged at 50p a day payable through School Money.

In the first week back, we will confirm all places for week commencing 14th September, and will ask you to then subsequently book places on a week by week basis.



After School Clubs

We are incredibly proud of our Extra Curricular offer and fully intend to get this back up and running and on offer to all of our pupils as soon as we can.

Due to the guidance in place, it will not be possible to offer extra curricular activities when we first return in September, but the staff will begin to phase the clubs back in following the October half term with the aim of getting our extensive extra curriculum offer back in place by the spring term.





TRACK and TRACE

All schools are required to actively engage in the 'Track an Trace' system.

Pupils, staff and other adults will not be permitted to come into the school if they have [coronavirus \(COVID-19\) symptoms](#), or have tested positive in the last 7 days.

If anyone in the school becomes unwell with a new, continuous cough or a high temperature, or has a loss of, or change in, their normal sense of taste or smell (anosmia), they will be sent home and advised to follow '[stay at home: guidance for households with possible or confirmed coronavirus \(COVID-19\) infection](#)', which sets out that they must self-isolate for at least 7 days and should [arrange to have a test](#) to see if they have coronavirus (COVID-19). Other members of their household (including any siblings) should self-isolate for 14 days from when the symptomatic person first had symptoms.



What will we do if a member of the school community tests positive?

All parents/staff and visitors to the school are required to inform the school if they or their family members have had a positive test for Covid-19.



The school will contact the local health protection team.



The health protection team will carry out a rapid risk assessment to confirm who has been in close contact with the person during the period that they were infectious, and ensure they are asked to self-isolate.



Household members of those contacts who are sent home do not need to self-isolate themselves unless the child, young person or staff member who is self-isolating subsequently develops symptoms. If someone in a class or group that has been asked to self-isolate develops symptoms themselves within their 14-day isolation period they should follow '[stay at home: guidance for households with possible or confirmed coronavirus \(COVID-19\) infection](#)'. They should get a test, and:

- if the test delivers a negative result, they must remain in isolation for the remainder of the 14-day isolation period. This is because they could still develop the coronavirus (COVID-19) within the remaining days.
- **if the test result is positive, they should inform their setting immediately, and must isolate for at least 7 days from the onset of their symptoms**

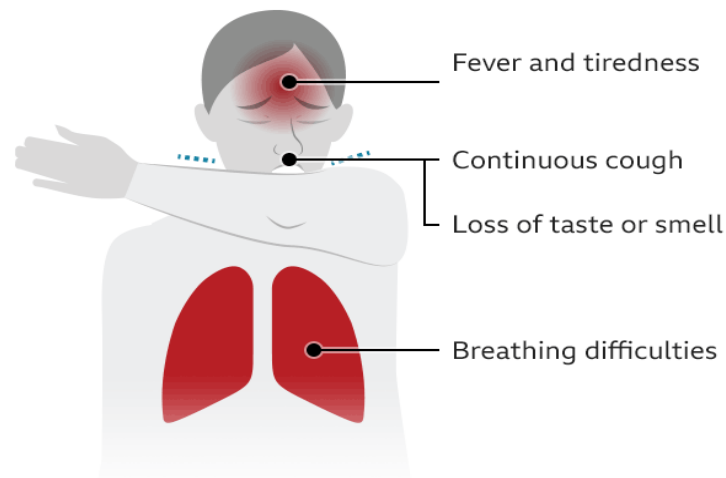


The health protection team will work with schools in this situation to guide them through the actions they need to take. Based on the advice from the health protection team, schools must send home those people who have been in close contact with the person who has tested positive, advising them to self-isolate for 14 days since they were last in close contact with that person when they were infectious

Checking for symptoms of Covid-19

- Temperature checks will not be taken on arrival by the school but we recommend parents do this daily as an extra precaution.
- **Do not risk the lives of our pupils and staff by administering Calpol before bringing your child to school to bring down a temperature.**
- Any child or adult showing symptoms-there is an isolation area in school. Parents will be called immediately and parents will be required to immediately collect their child.

Coronavirus: Key symptoms



Source: NHS

BBC

National Guidance [here](#)

Public Health England Advice

PPE-Personal Protective Equipment

-Wearing a face covering or face mask in schools or other education settings is **not recommended**.

-PPE is only needed if children need intimate care, young people and students whose care routinely already involves the use of PPE due to their intimate care or if a child, young person or other learner becomes unwell with symptoms of coronavirus.

Social Distancing

-We know that, unlike older children and adults, Early Years and Primary age children **cannot be expected to remain 1+ metres apart from each other and staff**. Schools should therefore work through the hierarchy of measures set out above:

- avoiding contact with anyone with symptoms
- frequent hand cleaning and good respiratory hygiene practices
- regular cleaning of settings
- minimising contact and mixing

Where settings can keep children 2m away-they should do so.

Key Information

In schools, preventing the spread of coronavirus involves dealing with direct transmission (for instance, when in close contact with those sneezing and coughing) and indirect transmission (via touching contaminated surfaces). These include:

- minimising contact with individuals who are unwell by ensuring that those who have coronavirus symptoms, or who have someone in their household who does, do not attend childcare settings, schools or colleges
- cleaning hands more often than usual - wash hands thoroughly for 20 seconds with running water and soap and dry them thoroughly or use alcohol hand rub or sanitiser ensuring that all parts of the hands are covered
- ensuring good respiratory hygiene by promoting the 'catch it, bin it, kill it' approach
- cleaning frequently touched surfaces often using standard products, such as detergents and bleach
- minimising contact and mixing by altering, as much as possible, the environment (such as classroom layout) and timetables (such as staggered break times).



Public Health
England

National Guidance [here](#)

Hygiene Measures

- The School will be thoroughly cleaned throughout the day, including toilets.
- Regular hand washing timetabled for all classrooms.
- [Catch It/Bin It/Kill It.](#)
- Handwashing will be communicated and timetabled regularly in school. Most classrooms are fitted with sinks and communal areas are fitted with a sink, soap and hand sanitizers.
- Tissues will be available in all classrooms in order to [Catch It/Bin It/Kill It.](#)
- Common areas and equipment will be cleaned down at regular intervals during the day with antibacterial sprays and wipes.
- Equipment will be given to all pupils.
- Water bottles will be provided to all children on the first day of school. These will be taken home each evening to be cleaned and refilled ready for the next day. We will provide disposable cups in the classrooms across lunchtime but to reduce waste please ensure your child brings their provided water bottle daily.

[School Cleaning Guidance](#)

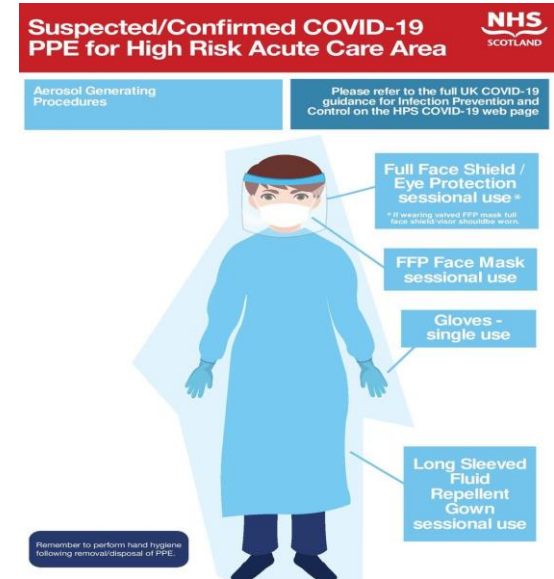
Handwashing Guidance [here](#)



Personal Protective Equipment

- PPE will be provided to staff when dealing with pupils who have intimate care needs and any pupils displaying symptoms.
- This will also be available for staff that request it who feel vulnerable.
- It is down to staff and pupil's personal choice to wear PPE.
- School will not provide PPE for pupils as it is against Public Health's advice, however if they wish to bring their own, that is their choice.
- There will be a dedicated room within the school for CoVid19 with PPE stock and facilities for any staff member or child displaying symptoms.
- Any pupil displaying symptoms will be taken to this room and parents will be called to immediately collect. A call will then be made to all other children's parents within that bubble to inform them.

National Guidance [here](#)





As from Wednesday 9th September staggered start/finish times will be as follows

Please check these times carefully as your child will now be in their new year group.

| Current Year Group | Start Time | Finish Time |
|---------------------------|--|--------------------|
| Reception | Your class teacher has provided information for your transition into school. | |
| Year 5 and 6 | 8:40 | 2:40 |
| Year 3 and 4 | 8:50 | 2:50 |
| Year 1 and 2 | 9:00 | 3:00 |
| Foundation 1 | 8:30-11:30 | 12:00-12:30 |

Nursery Drop Off and Pick Up Arrangements

Please read the information below regarding pick up and drop off arrangements for different times in the day. These arrangements must be followed. Thank you.

| | |
|-------------------|---|
| Return Date | The parents Nursery children have already had a letter informing them of the return/start date for their child. |
| Strict Start Time | Morning Session 8.30am-11.30am Afternoon Session 12.30pm-3.30pm |

Nursery Pick up/Drop off:

Parents dropping children off for a morning session will be required to follow the one way system in place.

Parents picking up and dropping off at lunch time will use the same entrance and exit in front of school.

Parents collecting children at the end of the day must use the one way system in place.