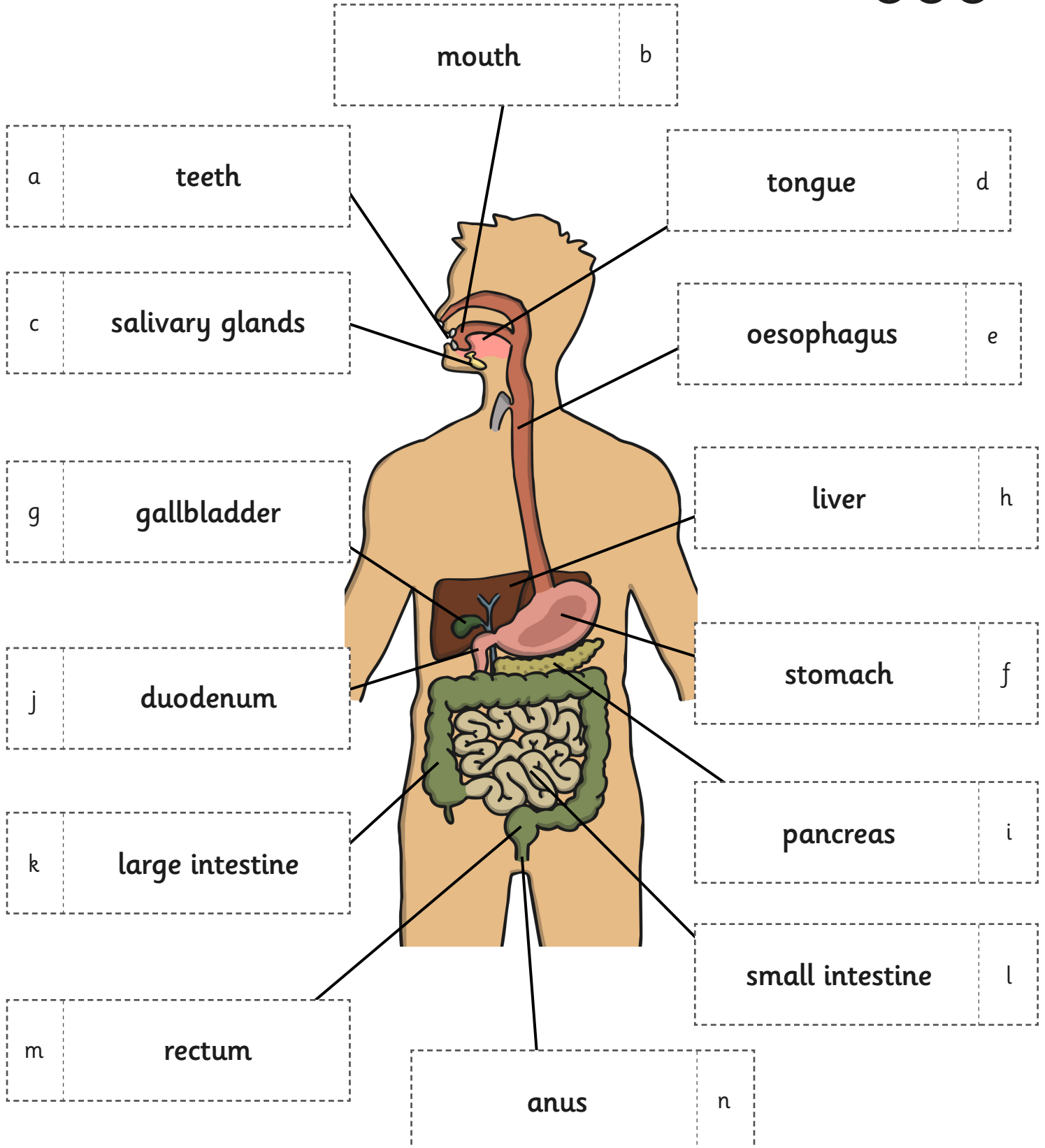




Interactive Digestive System





Cut out the digestive system function flaps below and stick them on the correct body part on the worksheet.

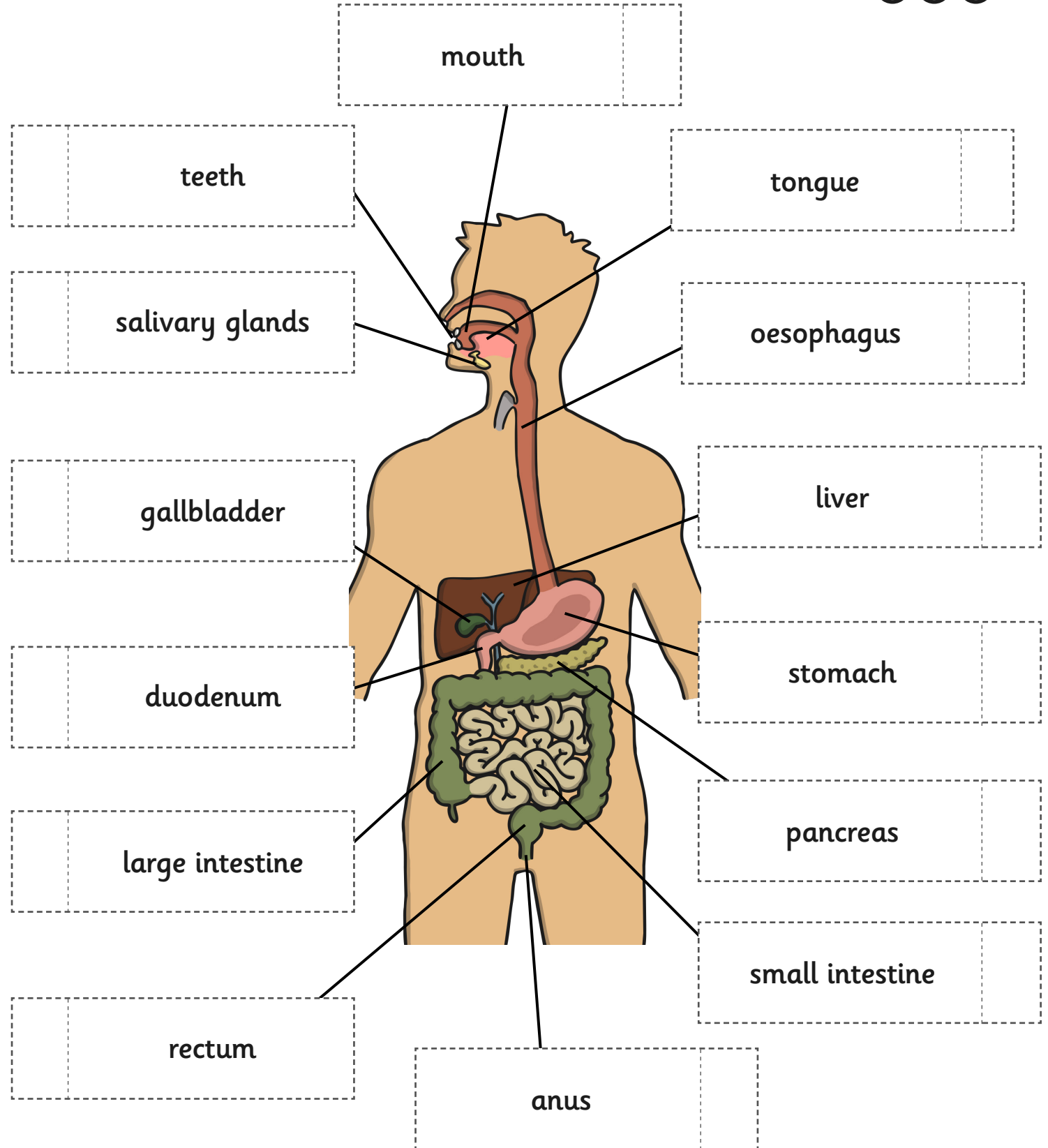
a	Food is cut up and ground up.	m	Stools stored here and informs brain of need to get rid of waste.	f	Acid and Enzymes break food down and mixes it up.
c	Produces saliva to soften food in the mouth.	b	Food is entered here.	i	Produces enzymes to breakdown fats, proteins and carbohydrates.
g	Stores and releases bile.	d	Mixes food and saliva.	l	Waste food passed through to large intestine.
j	Food is broken down by bile and enzymes break down food.	e	The path from the mouth to the stomach.	n	Stools are released from here at the end of the digestive system.
k	Stools formed from waste food.	h	Produces bile.		

Cut out the digestive system function flaps below and stick them on the correct body part on the worksheet.

a	Food is cut up and ground up.	m	Stools stored here and informs brain of need to get rid of waste.	f	Acid and Enzymes break food down and mixes it up.
c	Produces saliva to soften food in the mouth.	b	Food is entered here.	i	Produces enzymes to breakdown fats, proteins and carbohydrates.
g	Stores and releases bile.	d	Mixes food and saliva.	l	Waste food passed through to large intestine.
j	Food is broken down by bile and enzymes break down food.	e	The path from the mouth to the stomach.	n	Stools are released from here at the end of the digestive system.
k	Stools formed from waste food.	h	Produces bile.		



Interactive Digestive System





Cut out the digestive system function flaps below and stick them on the correct body part on the worksheet.

Food is cut up and ground up.	Stools stored here and informs brain of need to get rid of waste.	Acid and Enzymes break food down and mixes it up.
Produces saliva to soften food in the mouth.	Food is entered here.	Produces enzymes to breakdown fats, proteins and carbohydrates.
Stores and releases bile.	Mixes food and saliva.	Waste food passed through to large intestine.
Food is broken down by bile and enzymes break down food.	The path from the mouth to the stomach.	Stools are released from here at the end of the digestive system.
Stools formed from waste food.	Produces bile.	

Cut out the digestive system function flaps below and stick them on the correct body part on the worksheet.

Food is cut up and ground up.	Stools stored here and informs brain of need to get rid of waste.	Acid and Enzymes break food down and mixes it up.
Produces saliva to soften food in the mouth.	Food is entered here.	Produces enzymes to breakdown fats, proteins and carbohydrates.
Stores and releases bile.	Mixes food and saliva.	Waste food passed through to large intestine.
Food is broken down by bile and enzymes break down food.	The path from the mouth to the stomach.	Stools are released from here at the end of the digestive system.
Stools formed from waste food.	Produces bile.	